

SUMMARY-INTERIOR FURNISHING WORK OF FURNISHIN, ELECTRICAL & AC WORK OF AYODHYA BRANCH,UP.		
S. No.	DESCRIPTION OF ITEMS HEAD WISE	Amount
1	INTERIOR WORK	
2	ELECTRICAL WORK	
3	AC WORK	
	GST AS APPLICABLE	
	TOTAL	

TENDER FOR FURNISHING WORKS FOR UTTAR PRADESH GRAMIN BANK, AYODHYA BRANCH, UP.						
A		FURNISHING WORKS (BRANCH)				
S. No.		Description	Qty	Unit	Rate (Rs.)	Amount
1		FALSE CEILING (Including ATM Ceiling)				
	a.	Providing and fixing GYPSUM BOARD FALSE CEILING in levels as per the detailed drawing - made up of G.I frames as specified by Gypsum India/Saint -Gobain Gyproc and 12mm thick Gypsum board with suitable suspenders fixed to the ceiling. Ceiling section, perimeter channel of size 20X27X30 mm and 0.55 mm thick for light fittings, AC Grills, diffusers, suspenders etc. shall be standard sections supplied by Gypsum India/ Saint Gobain. Spacing of intermediate channels shall be at 1200 mm c/c and ceiling section at 457 mm c/c. The work includes taping and jointing, applying primer, two or more coats of plastic emulsion paint of approved shade ICI/ ASHIAN PAINTS make, making cut-out for light fixtures /fittings, etc. The Final coat shall be done with FOAM ROLLER and no brush marks should be visible. Providing of perimeter channels / beading etc. as per drawing complete in all respects.(All measurement in sqft only and finished surface area shall be measured)	425	sqft		
	b.	GRID FALSE CEILING(24" x 24")				
		24"x24" Grid False Ceiling Providing and fixing in the true horizontal level false ceiling system of Armstrong world industries. The suspension system shall be the Armstrong Trulock Silhouette revealed profile grid system with 15mm wide flanges incorporating a 3mm or 6mm central recess color black or white revealed Silhouette main runners and cross tees to have mitered ends with birds mouth notches to provide mitered cruciform junctions. Main runners to be spaced at 12mm c/c fixed by using 2mm pre straightened GI Wire.Main tee,rotary stitched of size 15mm x44mmx3600mm at every 1200mm c/c maximum and 1200mm cross tee of size 15mmx44mm x1200mm at every 600 mm c/c maximum and 600 mm c/c cross tee of size 15 mm x 44 mm x 600 mm at every 1200mm c/c maximum and 19mmx19mmx3000 wall angle. All as per the design and instructions Architects (make- Armstrong & thickness of tile- 16 mm)	370	sqft		
2		PARTITIONS				
	a	Low height Partition Providing & fixing of LOW HEIGHT PARTITION (HT. 4'-6") made of 2"x2" alluminium tublar section framework (16 gauge) 2'0" c/c both ways 10 mm MDF BOARD of approved make on both faces finished with 1mm thick laminate of approved shade. Till the height of 3'-3" and 1'-3"(10mm thk.) toughened glass on (side & front) top complete with teak beading, The PU polishing teak sections of approved shade as per drawing and fixing of soft board covering with similer fabric. Complete in all respects to the complete satisfaction of the Architect.	110	sqft		
	b	Full height Partition Providing & fixing of FULL HEIGHT PARTITION up to ceiling level partly glazed, made of 2"x2" alluminium tublar section framework (16 gauge) 2'0" c/c both ways 10 mm MDF BOARD of approved make on both faces finished with 1mm thick laminate of approved Make and shade. minimum 8 mm thick toughened glass of approved make with etching/taping as required) on the glazed portion. The work includes PU polishing on woodwork and teak beading etc. Complete in all respects to the complete satisfaction of the Architect. Including doors but excluding cost of door closers, mortise locks.	225	sqft		
	b1	Full height Partition Providing & fixing of FULL HEIGHT PARTITION up to ceiling level partly glazed, made of 2"x2" alluminium tublar section framework (16 gauge) 2'0" c/c both ways 12 mm BISON BOARD of approved make on both faces finished with 1mm thick laminate of approved Make and shade. minimum 8 mm thick toughened glass of approved make with etching/taping as required) on the glazed portion. The work includes spirit polishing on woodwork and teak beading etc. Complete in all respects to the complete satisfaction of the Architect. Including doors but excluding cost of door closers, mortise locks.	0	sqft		
	c	SEMI GLAZED PARTITION Providing & fixing of partly glazed (12mm toughened glass of approved make as per design), made of 2"x2" alluminium tublar section framework (16 gauge) 2'0" c/c both ways 10 mm MDF BOARD of Approved Make on both faces finished with 1mm thick laminate of approved make & shade The work includes providing PU polishing of shade on woodwork and steam beach beading etc. Including doors but excluding cost of door closers mortise locks. Complete in all respects to the complete satisfaction of the Architect./Engineer.	70	sqft		
	d	Cash Cabin front Partition With 12 mm toughened Glass including fixing. Complete in all respect.	18	sqft		
	e	Providing and fixing 1.5/ 2 x 4/5 feet bevelled 12 mm toughened Glass on all tables /counters complete as per drawing including glass support. Glass has to fixed as vertical partition in the front end of the counter (towards customer side) to restrict direct access of customer	12	sqft		
	f	Providing and fixing of fallowing items/ accessories compleeted in all including				
	(i)	Knight latch for cash cabin door.(Make Godrej)	1	no.		
	(ii)	Mortise locks with handles.(Make Godrej)	3	no.		
	(iii)	Hydraulic Door closer.(Make Godrej/ Universal)	3	no.		
	(iv)	Floor springs.for Glass door.(Make Godrej/ Universal)	1	no.		
3		GLASS DOORS (MAIN ENTRANCE)				
	A	Providing and fixing of (3'-0" / 3'-6" X8'-0")12mm toughened glass door with18" long SS handles, floor spring (Ozone-FS-9400) etc, locking arrangement of brass make at top of standard make(patch fitting), including fixing of Frosted strip vision film & bank logo as directed by the Bank/ Architects.	28	sqft		
	B	FIXED GLAZING Providing and fixing external FIXED GLAZING comprising of 12 mm thick toughened glass of approved Make with top, bottom and vertical U Channel frames comprising of powder coated (shade as approved) 16 gauge Aluminium members of approved shade 1.5mm avg. thick top, bottom & vertical member with clip sections as per specifications and drawings to complete satisfaction of the Architect.	35	sqft		

	C	BLOCK DOORS Providing and fixing solid core 38 mm solid core flush door finished with lippings in all side with necessary door hinges , cylindrical locks(golden, Godrej) , door clouser, door stoppers, etc with a frame work of T.W./Beech wood size 75mm x 62.5mm with necessary hold fast fixed to the wall/partition. 1 mm laminate to be fixed on both sides duly finished,edges to be finished with wooden lippings.A wooden moulding size 1.5"x2/8" to be provided all along the periferi of the frame work in the both sides . All the wooden area to be duly polished as per specification of the Architect. In case of Partly glazed door 8 mm thk etched toughened glass with granular blasting/sand blasting as per design of the Architect to be fixed with necessary mouldings.				
--	---	--	--	--	--	--

	a	Partly glazed door with out etching & frosting				
	i	(2'-6"/3'-0"x7'-0") for PASSAGE Door & Record Room	75	sqft		
	b	Blocked doors				
	i	(2'-6"/3'-0"x7'-0") for Toilets, Pantry & UPS doors	35	sqft		
4		COUNTERS AND TABLES				
	a	Providing and fixing Manager Table with 10mm beveled toughened glass of approved make to be fitted on top obtain the total height of 2'-6" as per detailed drawing, made up of 19mm board of approved Make and finished with 1 mm thick laminate of approved make, and shade. Table(with one side drawer unit and another side drawer unit) shall be provided with drawers sliding on telescopic channels and one cabinet with proper locking arrangements and keyboard with telescopic channels . The work includes providing and fixing of foot rests, shelf for CPU, furniture locks, wire managers, PU polishing of steam beach/ white cedar beading etc. and The inner exposed surfaces to be finished with 0.8mm thik laminate of approved shade. complete in all respects to the entire satisfaction of the Architect/Bank.				
		Table size: 5'-6" / 6'-0" x 3'-0 x 2'-6"	1	no.		
	b	SIDE CREDENZAS				
		Providing and fixing SIDE CREDENZAS size 3'-0" to 4'-0" x 1'-3" x 2'-6" made of 19mm board of approved make finished with 1 mm thick laminate of approved Make and shade on top, back, sides and front having two drawers and cabinet below complete with all accessories like locks, handles, megnetic catcher etc. Teak wood beading on all exposed edges with PU polish. (Should not be attahced with partitions)	0	no.		
	d	WORK STATIONS TABLE Providing and fixing of COMPUTER work Stations as per layout plan and and 10mm beveled Toughened glass of approved make to be fitted on top obtain the total height of 2'-6" high working top (As per drawing) made up of 19mm board / ply of approved Make, finished with 1 mm thick laminate of approved Make, shade as approved as per the detailed drawing . The tables shall have as per approved shade and color. All exposed surfaces (such as counter front, sides, drawers and cupboard etc) must be finished with 1mm thick laminate of approved make. Table top shall be finished with 1mm thick laminate. The inner exposed surfaces to be painted over one coat of primer and enamel paint of approved shade. Each unit of table shall be provided with keyboard tray with telescopic channels. The work includes fixing of wire managers, locks, footrests, PU polishing the steam beach beading, lipping, exposed frame, etc. as per drawings, and The inner exposed surfaces shall be finished with 0.8mm thik laminate of approved shade. complete in all respects to the complete satisfaction of the Architect/Bank.				
	a	Officers Table (4'-6"/5'-0" x 2'-6 x 2'-6") on top of table 10mm thk beveled toughened glass.	0	nos		
	b	Officers Table/ staff tables (4'-0" x 2'-6" x 2'-6") additionl (Daftri & guard's Tables)	3	nos		
	c	CASH COUNTER WITH TOP UP ALUMINIUM GRILL Providing and fixing of CASH COUNTER 2'-6"/3'-9" high made up of 19mm board/ply of approved make and finished with 1 mm thick laminate of make, shade as approved and as per detailed drawing. 2'-6' wide working table top, key board tray, drawer with telescopic channels (TOP DRAWER SHOULD BE DIVIDED INTO SECTIONS SO AS TO PILE DIFFERENT CURRENCY NOTES SEPERATELY) and cupboard with fixing of soft board with similer fabric. All exposed surfaces (such as counter front, sides, drawers and cupboard etc) to be finished with 1mm thick laminate of approved make. The inner exposed surfaces shall be finished with 0.8mm thik laminate of off white shade. The work includes fixing of furniture locks, wire managers, PU polish of steam beach wood beading/ lipping etc.complete in all respects to the entire satisfaction of Architect. Transaction top should be minimum 18" and (4'-5"/ 5' -0" Average Length) and fixing of aluminium grill on top of cash counter spacing of grill 75mm & thikness of grill 5/6 mm.	1	nos		
5		MISCELLANEOUS FURNITURE				
	a	Providing & fixing STORAGE CABINETS indipandent units (movable) 12 feet long (maximum) 4'-6" ht and 1'-6" deep as per layout plan made up of 19mm board/ply of approved make and finished with 1mm thick laminate of approved make, shade and as per detailed drawing. one shelves made up of 19mm thick board, each drawer(with lock) & cabinet(with lock) 19mm thickness portion every place must be finished with proper liping/ margin teak wood finish. In side and back shall be finished with 0.8mm thick laminate of approved Make and color The work includes supplying, fixing of hinges, magnetic catchers, handles, locks, teak lipping etc as specified. complete in all respects.				
	b	Full height STORAGE CABINATES upto 8'-6" false ceiling hight specification as per (a)	135	Sqft		
	c	Half height STORAGE CABINATES upto 4'-0"/ 2'-6" hight specification as per (a)	75	Sqft		
	f	COLUMN / WALL PANNELING Providing and fixing of COLUMN PANNELING as per design, consisting of 10 mm thick MDF BOARD of approved Make fixed on wall with made of 2"x2" alluminium tublar section framework (16 gauge) 2'0" c/c both ways. The above shall be laminated with 1mm thick mica of approved Make, The work includes PU polishing of wood beading, complete in all respects as per detailed drawings to the complete satisfaction of the Architect.	998	sqft		
7		NOTICE BOARD				
		Providing and fixing soft board with glass White board necessary framework and 12mm bwp plywood on top 12MM jolly board to be fixed finished with fabric @Rs80 , with necessary mouldings duly polished along the periferi.The work to be completed as per approval and satisfaction of the Architect.	12	Sft		
8		ACP WALL PANELLING				
		Providing & Fixing ACP sheet (4 MM THK) panelling with 2 1/2" x 1 1/2" Aluminium (16 gauge) framework at 2'-0" c/c fixed over the existing wall/ partitions. Approved Make- ALUCOBOND/ ALUDECOR	0	Sft		
9		WRITING LEDGE Providing and fixing writing ledge as per design made out 19mm comm. board with necessary grove patterns with 1.0mm laminate. 10mm thk machine polished glass to be provided on top of the writing ledge. Small boxes to be made out of 12mm comm. ply to be made on top of the writing ledge finished with 1.0 mm laminate, inside .08 mm laminates .The work to be completed as per design and approval of the architect.	1	no.		

10	SUGGESTION BOX Providing and fixing Suggestion box as per design made out 19mm comm. board with necessary grove patterns with 1.0mm laminate. 10mm thk machine polished glass to be provided on top of the writing ledge. Small boxes to be made out of 12mm comm. ply to be made on top of the writing ledge finished with 1.0 mm laminate, inside 0.8 mm laminate .The work to be completed as per design and approval of the architect.	1	no.		
----	--	---	-----	--	--

11		CHEQUE DEPOSIT BOX Providing and fixing Suggestion box as per design made out 19mm comm. board with necessary grove patterns with 1.0mm laminate. 10mm thk machine polished glass to be provided on top of the writing ledge. Small boxes to be made out of 12mm comm. ply to be made on top of the writing ledge finished with 1.0 mm laminate, inside 0.8 mm laminate .The work to be completed as per design and approval of the architect.	1	no.		
12		WICKET GATE Providing and fixing 4' - 0' ht. WICKET GATE between the counters to check the movements of customers inside the restricted area. Fully paneled door shutter including the door frame made up of styles and top rail, bottom rail using 1st class hardwood, 9mm ply of approved Make to be fixed on both faces finished with 1 mm thick laminate of approved Make. The work includes providing and fixing necessary hardware SS finish latches, butt hinges etc., steam beach beading etc. (PU polished) as per drawings to the full satisfaction of the Architect, complete in all respects.	2	no.		
		GRAND TOTAL				
		GST extra as applicable				
RECOMMENDED MAKE TO BE USED						
	SR.	DESCRIPTION	MAKE / BRANDS			
	1	MDF. (Medium Density Fibre Board) – CONFIRMING TO IS : 12406 - 2003. (Density: 750 – 850 Kgs/m3) colour code follow as per Bank Norms.	CENTURY/GREENPLY/ DURO/ NATIONAL			
	2	PLYWOOD – BWP (Boiling Water Resistant, Termite Resistant & Borer Resistant) – CONFIRMING TO IS: 303.	CENTURY/GREENPLY/ DURO/ NATIONAL			
	3	BLOCK BOARD – CONFIRMING TO IS : 11255 - 2003.	CENTURY/GREENPLY/ DURO/ NATIONAL			
	4	FLUSH DOOR – CONFIRMING TO IS : 2202 (Part – 1) – 1991.	CENTURY/GREENPLY/ DURO/ NATIONAL			
	5	LAMINATE – CONFIRMING TO IS : 2046-1995.	CENTURY/GREENLAM/ SUNMICA			
	6	Lipping & Moulding	First Class Teak Wood			
	7	Gypsum ceiling	Gypsum India, Saint - Gobain Gyproc india			
	8	Grid Ceiling	Armstrong, Dexune			
	9	GI Support system for False Ceiling	GYPSTEEL ULTRA			
	10	Adhesive	Fevicol SH.			
	11	Locks/Handles & all other hardware	OZONE/Dorma/ Godrej			
	12	Glass	Modi/Asahi(Tata),Saint Gobain			
	13	Aluminium	Jindal/ Hindalco/ NALCO			
	14	Door Closer	OZONE/Dorma/ Godrej			
	15	FLOOR SPRING	OZONE/Dorma /Godrej)			
		Vertical Blinds	Vista			
	16	Paint	Nerolac / Asian Paints			
	17	Wood Preservative	Bison by British Paints / Termiseal by ICI			
	18	Cement	ACC / Ambuja/Birla Plus			
	19	Preservative	Solignum/Black Japan / Termiseal			
	20	Sanitary Fittings	Kohler / Hindware			
	21	CP fittings	Jaguar			
	22	GI pipe	Jindal/Bhushan			
	23	Floor & Wall tiles	Nitco/Kajaria			
	24	Overhead Water tank	Sintex			
NOTE: 1- The contractor is strictly advised to use the makes specified/approved by the Bank/Architect, unspecified items will not be paid until they are changed with the specified ones. 2- The Plywood used for the work shall be BWR (Boiling water proof range) confirming to IS 303.						
Place: Date: _____ Signature of contractor with seal						

BILL OF QUANTITIES FOR ELECTRICAL WORK AT UTTAR PRADESH GRAMIN BANK, AYODHYA BRANCH, UTTAR PRADESH.					
(BRANCH)					
S.NO.	DESCRIPTION OF ITEM	QTY	UNIT	RATE	AMOUNT
1	SITC of 150Amp Kit kat Fuse unit 3 nos with 200 Amp neutral link on wooden board (3' x 3') complete with connections (new).	1	Set		
	ELECTRICAL PANEL				
2	Design, manufacture, providing, storing & installing in position, effecting proper connection, testing and commissioning of panel made of 14 SWG, CRCA sheet steel. It shall be dust and vermin proof. It shall have compartmentalized construction with bus bar chambers, cable alley, cable glands plate etc. as required, duly painted from inside as well outside. It shall have the following - MAIN PANEL. 1 No. 100 Amp. TPN, MCCB (10 KA breaking capacity), Busbars. 100 Amp., 3 phase, 4 strips, 415 volts, 50 Hz. copper busbars with colour coded PVC heat shrinkable sleeves. Instruments. Multi function Meter for Voltage, Ampere, Power factor, KWH, Data 1 No. with CT 75/5 Outgoing. 3 Nos. 40 Amp. TPN, ELCB (Power AC DB, Branch UPS DB and One Spare) 3 Nos. 25 Amp. TPN, ELCB (For Light/Fan DB, ATM UPS DB & Spare Feeder) 10 AMP DP MCB. 3 Nos (for Glow Sign board, ATM Lighting and Strong Room Lighting) 1 No., 63 Amp. Four Pole Change Over for D.G. Set. (Seperate from the panel) The design of panel should be got approved by the Architect before manufacturing.The job shall be completed, to the satisfaction of the Bank Engineer/ Architect. Any deviation in specification/ distribution shall be viewed seriously.	1	Set		
3	UPS I/P, O/P AND DISTRIBUTION				
a.	SITC of 40/32 AMP industrial socket along with DPMCB for UPS & Inverter I/P	2	Nos.		
b.	SITC of 20AMP industrial socket along with MCB for UPS & Inverter O/P	2	Nos.		
c.	SITC of 12 WAY SPN DB Double Door (1 No. 40 AMP DP MCB and 10 NOS. 6-10 AMP SPMCB) (Branch UPS Power Distribution for UPS Points at Manager Cabin (2nos.), ATM (1No.) and Staff counters (6nos.).	1	Nos.		
d.	SITC of 63 Amp Rotary Phase selector switch complete with RYB indication lifht in incloser complete in all respects as required. (Branch UPS)	1	Nos.		
4	RAW POWER & FAN, LIGHTING DB & AC DISTRIBUTION BOARD				
a.	4 WAY TPN DB Double Door (1 No. 32 AMP TP MCB and 12 Nos. 6-10 AMP. SPMCB in each outgoing circuit for Light, Fan & 6A Socket) all complete.	1	Nos.		
b.	4 WAY TPN DB Double Door (1 No. 40AMP TP MCB and 12 Nos. 20 AMP. SPMCB in each outgoing circuit for 5 Nos. ACs & 5 Nos. 15A Power Points, 2 spares MCBs.	1	Nos.		
5	CABLES				
a.	SITC of 3.5 Core 25.0 Sq.mm Aluminium Armoured Cable (From Electric Meter to Electric Panel) , complete with end termination and all respect as required.	30	Mtr.		
b.	SITC of 4 x 6.0 Sq.mm Copper Wire + 1 x 4.0 Sqmm Copper Earth Wire (Panel to UPS Incomer, LDP and UPSDB) in PVC Pipe fixing on walls or chassing the walls and making it good with cement mortar of 1:5 ratio and painting compete with end termination/lugs and in all respect as required.	35	Mtr.		
c.	SITC of 4 x 10.00 Copper Wire + 1 x 4.0 Sqmm Copper Earth Wire (Kit Kat fuse unit to AC / POWER DB) in PVC Pipe fixing on walls or chassing the walls and making it good with cement mortar of 1:5 ratio and painting compete with end termination/lugs and in all respect as required.	25	Mtr.		
d.	SITC of 2 x 6.0 Sq.mm Copper Wire + 1 x 2.5 Sqmm Copper Earth Wire (Rotary Switch to UPS and UPS to UPS DB) in PVC Pipe fixing on walls or chassing the walls and making it good with cement mortar of 1:5 ratio and painting compete with end termination/lugs and in all respect as required.	35	Mtr.		
e.	SITC of 2 x 2.5 Sq.mm Copper Wire + 1 x 2.5 Sqmm Copper Earth Wire (Electric Panel Glow Sign Board) in PVC Pipe fixing on walls or chassing the walls and making it good with cement mortar of 1:5 ratio and painting compete with end termination/lugs and in all respect as required.	15	Mtr.		
6	AC POINT				
a.	Point Wiring with 2 No. 4.0 Sq.mm and 1 No. 2.5 Sq.mm Multistrand Copper Wire & 20/25 Amp. Metallic plug & Socket DB complete in all respect as required by the Bank (for 1.0 & 1.5 Tr Split AC)	4	Nos.		
b..	Point Wiring with 2 No. 6.0 Sq.mm and 1 No. 4.0 Sq.mm Multistrand Copper Wire & 25/32 Amp. Metallic plug & Socket DB complete in all respect as required by the Bank (for 2.0 Tr Split AC)	0	Nos.		
7	EARTHING				
a.	PIP technology GEL type 50mmdia 3000mm long earth electrod. One Earthing for Neutral grounding, One earthing for Panel body grounding, One earthing for UPS body grounding, One for UPS output	2	Nos.		
b.	12 SWG Bare Copper Earth Wire from earthing pit /Earth terminal to load point (UPS DB and Main DB etc)	70	Mtr.		

S.NO.	DESCRIPTION OF ITEM	QTY	UNIT	RATE	AMOUNT
8	UPS POINT				
a	Supply & Installation of point wiring for Primary UPS or stabilized power plug points on workstations / table for computers using 3 x 1.5 Sq.mm copper conductor multi strand FR PVC sheathed flexible wire pulled through floor raceways/conduit and taken upto table top using PVC rigid or flexible conduits run within wooden/metal partitions. Each point consisting of 2 nos of 10A 3 pin sockets, 1 nos 16A 2/3 pin sockets, 1 nos 16A Switch (Modular) & 1 nos indicator, wired together forming one point. The earth wire of green color only. No secondary UPS Points to be made.	8	Nos.		
9	RAW POWER POINT 16A SOCKET POINT IN WALL ONLY				
a.	Supply & Installation of point wiring for Primary Raw power plug points on walls only for computers using 2X4+1X2.5 Sq.mm copper conductor PVC sheathed flexible wire pulled through already laid floor raceways and taken upto table top using PVC rigid or flexible conduits run within wooden/metal partitions. Each point consisting of 2 nos of 16A 2/3/5 pin socket & 2 nos 16A Switch (Modular), wired together forming one point. The earth wire of green color only. No secondary Points to be made.	6	Nos.		
10	LIGHT/FAN POINT				
	Supply & Installation of concealed point wiring using 600v grade 1.5 Sq.mm copper conductor PVC insulated wires (with proper R,Y,B color code) pulled through heavy gauge PVC conduits laid concealed over false ceiling including 2 Nos. 2.5 sqmm circuit wires from the relevant DB and also including 2.5 sqmm green color copper earth wire and switch plate, switches, etc. as approved by the Bank's Engineer/Architect.				
a.	Primary light points including the cost of 10 A modular switch	15	Nos.		
b.	Secondary light points looped from the primary point (For Down Lights & Tubelights only, Two downlights from one point)	22	Nos.		
c.	Ceiling Fan Point including the cost of 10A modular Switch along with 4/5 step electronic fan regulator.	2	Nos.		
d.	Wall Fan Point along with 10 AMP modular switch	7	Nos.		
e.	Exhaust Fan Point along with 10 AMP modular switch	3	Nos.		
f.	6/10A Switch with 5pin 10A socket in counter, light & fan board	7	Nos.		
11	DATA CABLING & POINT THERE MUST BE MINIMUM 3FEET DISTANCE BETWEEN DATA AND				
	Supplying and laying of D-Link make CAT-6 (UTP) cable through trenches / conduits.				
a.	Supplying and laying D-link make CAT-6 Cable complete with CAT-6 information outlet with plate & surface Box at individual Tables	8	Nos.		
b.	Supplying and fixing of 2 mtr long crimped patch cord	8	Nos.		
c.	Supplying and fixing of 1 Mtr long crimped patch cord	8	No.		
d.	Jack Panel - 24 ports	1	No.		
e.	SITC of 9U Rack including wire manager, power supply card, hardwares etc. complete in all respects	1	No.		
12	VOICE NETWORKING				
a.	Supply and fixing of 10 pair telephone MDF consisting of tag blocks, disconnector type, complete with powder coated metal enclose, krone tag block mounting arrangement telephone distribution chart and locking arrangement [for P&T/EPABX]	1	Job		
b.	Supplying and laying telephone cables 0.5mm dia 2 pair electrolytic tinned copper conductors PVC insulated and twisted pair with rip cord, through PVC conduits/Raceways and RJ11 telephone socket outlet. The rate shall include termination at both ends on tag blocks.				
5	1 No. RJ11 Telephone socket with plate and box	0	Nos.		
(i)	2 Nos. RJ11 Telephone socket with plate and box (1-Manager Cabin, 1- Advances, 1-Cash Officer)	3	No.		
13	FIXTURES				
	SITC of following fixtures as per make list				
a.	LED Square Light (2' x 2') fitting (white) - 36 Watts Philips LED Recessed Panel Light Square 36W (RC370B LED30S-6500)	13	Nos.		
b.	LED Down Lighter (white) - 9 Watts Philips Aura Style Edge 10w Led Downlighter, (Round Recessed Thin Trim, 47mm)	36	Nos.		
c.	LED Tube Light Patti Type (white) - 18 Watts Make/ Brand as per MAKE LIST	8	Nos.		
d.	Ceiling Fan - 900mm Make/ Brand as per MAKE LIST	2	Nos.		
e.	Wall Mounted 80/100 watt metal body Fan - 450mm, 1300 to 1500RPM Make/ Brand as per MAKE LIST	10	Nos.		
f.	Exhaust Fan Metal Body - 300mm Make/ Brand as per MAKE LIST	3	Nos.		
g.	Call Bell Wireless	1	No.		
h.	LED Bulb with holder (white) - 9 Watts	0	Nos.		
i.	Supply, Installation, Testing & Commissioning of 4 watt per meter (300 lumen per meter) LED TUBULAR cove Light with high efficiency electronic driver. (Make Philips)	35	Mtr.		

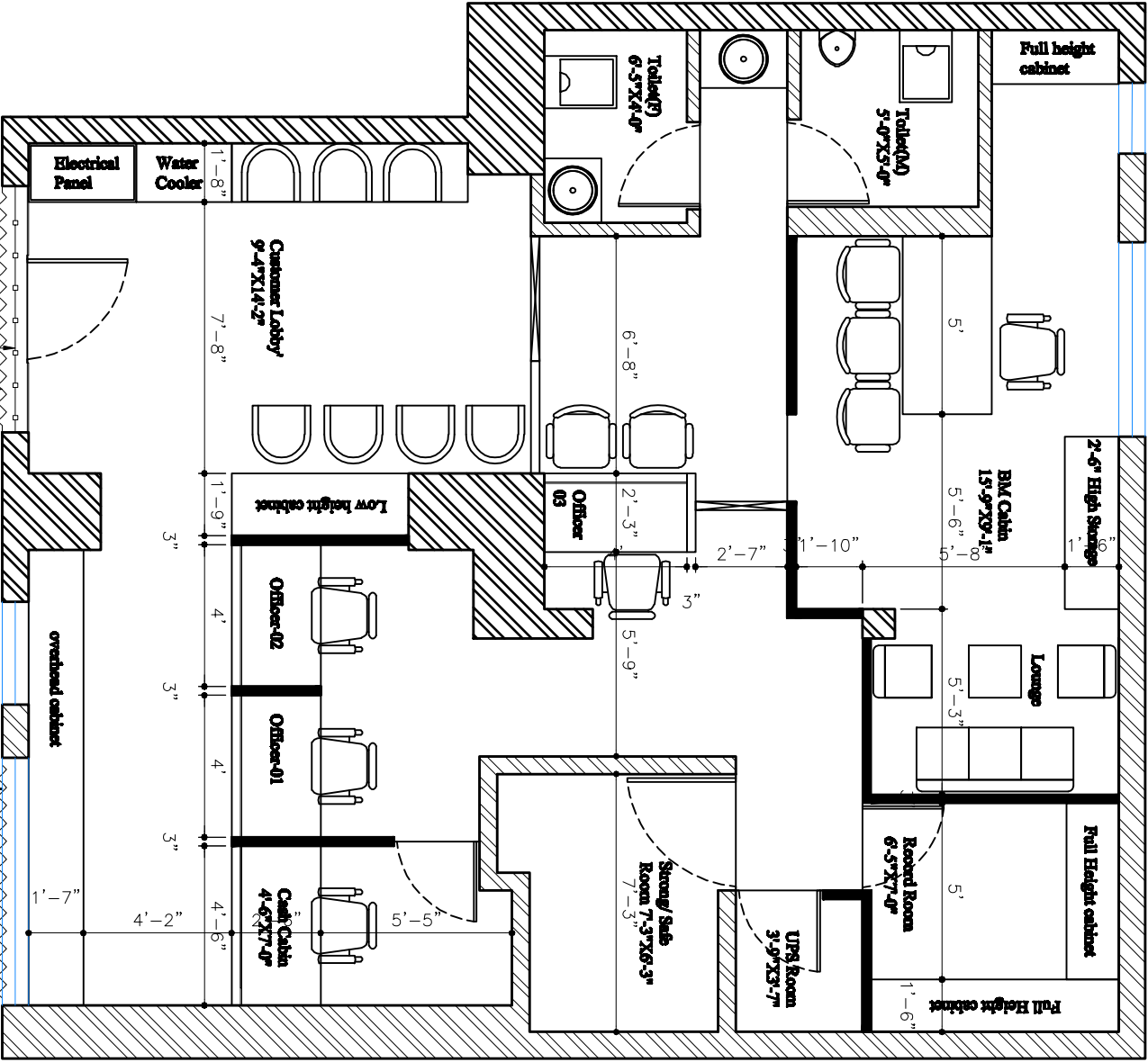
S.NO.	DESCRIPTION OF ITEM	QTY	UNIT	RATE	AMOUNT
	TOTAL (excl. GST) (Rs.)				

BILL OF QUANTITY FOR AC WORKS FOR UTTAR PRADESH GRAMIN BANK, AYODHYA BRANCH, UP.					
Sr. No	Particulars	Product Model No.			
1	3.0 TR Ceiling Suspended Cassette Unit 3 Star Non- Inverter Model or equivalent				
2	2.0 TR Ceiling Suspended Cassette Unit 3 Star Non- Inverter Model or equivalent				
3	1.5 TR Ceiling Suspended Cassette Unit 3 Star Non- Inverter Model or Equivalent				
4	2.0 TR Wall mounted Split Unit 3 Star Inverter Model				
5	1.5 TR Wall mounted Split Unit 3 Star Inverter Model				
6	1.0 TR Wall mounted Split Unit 3 Star Inverter Model				
Note: For any make, if OEM doesn't has specific star rating for the product but that product has equivalent energy saving as compared to the star rating, then vendor shall mentioned the same					
AIR-CONDITIONING WORKS:					
Air-conditioning System (3 Star - Wall mounted Split Unit/ Ceiling Suspended Cassette unit)					
Equipment Make – Voltas/ Daikin/ Hitachi					
Model – Cassette with copper condenser					
Copper Pipe- RAJCO/ MANDEV/ TOTALINE					
All the work of Drain pipe/copper pipe/cable shall be properly supported by clamps from the slab.					
AIR-CONDITIONING WORKS:					
Sr. No	SPLIT TYPE AIR CONDITIONERS				
A.	PART -A				
	HIGH SIDE WORK				
	Description	Unit	Qty	Rate	Amount
1	Supplying, erection, testing and commissioning following wall mounted Split/ Roof mounted cassette units of (Voltas/ Daikin/ Hitachi) with cordless remote complete with all necessary fittings duly insulated with 9 mm thick nitrile rubber pipe insulation with (evaporator coil – copper only), fan and fan motor, machine control panel improved Refrigerant Joints, .Air conditioners shall be fitted with hermetically sealed type suction cooled reciprocating or discharge cooled rotary compressor or scroll compressor. Compressor unit operating on R-32/ R-410. All complete as per drawing, approval and instructions of the Employer (Rates to be inclusive of Copper refrigerant pipe with insulation and Drain pipe up to 5 Mtr. length).				
a	1.0 TR wall mounted split unit (Minimum 3 Star rating Non- inverter type) including all necessary fittings and mountings as specified by the	Nos.	0		
b	1.5 TR wall mounted split unit (Minimum 3 Star rating Non- inverter type) including all necessary fittings and mountings as specified by the	Nos.	4		
c	2 TR wall mounted split unit (Minimum 3 Star rating Non- inverter type) including all necessary fittings and mountings as specified by the manufacturer.	Nos.	0		
d	1.5 TR Cassette type unit with 4 way/ round air flow including all necessary fittings and mountings as specified by the manufacturer. (5 star or Equivalent energy saving latest model Non- Inverter Type)	Nos.			
e	2.0 TR Cassette type unit with 4 way/ round air flow including all necessary fittings and mountings as specified by the manufacturer. (5 star or Equivalent energy saving latest model Non- Inverter Type)	Nos.	0		
f	3.0 TR Cassette type unit with 4 way/ round air flow including all necessary fittings and mountings as specified by the manufacturer . (5 star or Equivalent energy saving latest model Non- Inverter Type)				
	PART A				
B.	PART –B				
	LOW SIDE WORK				
1	EXTRA REFRIGERANT PIPING				





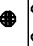


	Supplying and laying of Extra copper refrigerant piping with nitrile rubber pipe insulation, both of size as specified by the manufacturer suitable for 1.0 TR/ 1.5/2.0 TR Split type AC and 2.0/3.0 TR Cassette AC (From Indoor to outdoor Units) Beyond 3 M. Approved Meke- RAJCO/ MANDEV/ TOTALINE				
a	For 1.0 T Split unit	Mtr.	0		
b	For 1.5 T Split unit	Mtr.	60		
c	For 2.0 T Split Unit	Mtr.	0		
d	For 1.5 T Cassette Unit	Mtr.			
e	For 2.0 T Cassette Unit	Mtr.			
f	For 3.0 T Cassette Unit	Mtr.			
2	DRAIN PIPING				
	Providing and fixing drain piping up to drain as directed by the engineer in charge with all accessories e.g. elbows, unions, sockets, reducers, reducing tees, nipples etc. Complete job including cutting chiseling in walls, fixing with GI clamps, floor and making good of all chases/ cuts etc. and discharging the drain into a floor trap/ gully as per site conditions with insulation, both as specified by the manufacturer. Approved make- TOTALINE/ MTR				
a	25 mm dia PVC drain pipe for Split AC	Mtr.	70		
b	32 mm dia PVC drain pipe for Cassette AC	Mtr.	0		
c	40mm dia PVC drain pipe for Cassette AC	Mtr			
3	AUTOMATIC VOLTAGE CONTROLLER				
	Providing and fixing of Stabilizer shall be Automatic version with copper coil transformer and the voltage selection range shall be minimum depending on lowest peak recorded average in a month. Precise output voltage range (130V-170V to 240V -270 V). Ensure the rating of Stabilizer shall be in accordance with max rated power of ACs considering instantaneous peak load fluctuation.				
	Providing and fixing Stabilizer with 3-4 step relay and input voltage range of 130-270 V and output to be 230-240 V (Blue bird/ Oberoi Reputed Make) (copper winding).				
a	5 KVA (For 3.0/ 2.0 TR Split AC)	Nos.	0		
b	4 KVA (For 1.5/ 2.0 TR Split AC)	Nos.	4		
c	3 KVA (For 1.0/ 1.5 TR Split AC)	Nos.	0		
4	AIR-CONDITIONERS STAND WITH MS- CAGE				
1	Providing and fixing of lockable caging for outdoor unit grouted on wall or on roof with open able shutter made of 10 X 10 mm MS square bars placed vertically @ 5" c/c welded with 40 X 3 mm MS flat all- round. The frame shall be of angle 35mm*35mm and it shall be fixed to wall or roof with proper MS bracket to tackle the weight of outdoor unit. Item includes all necessary hardware, priming coat, synthetic enamel paint, hanger, clamps other accessories etc. All complete as per approval and instructions of the employer. Size shall be adequate for AC outdoor size & sufficient space around the outdoor suitable for servicing purpose for Outdoor unit.				
a	For 1.0 TR Hi Wall split units	Nos.	0		
b	For 1.5TR Hi Wall split units	Nos.	4		
c	For 2.0 TR Hi Wall split units	Nos.	0		
d	For 2.0 TR ceiling mounted cassette unit	Nos.	0		
e	For 3.0 TR ceiling mounted cassette unit	Nos.			

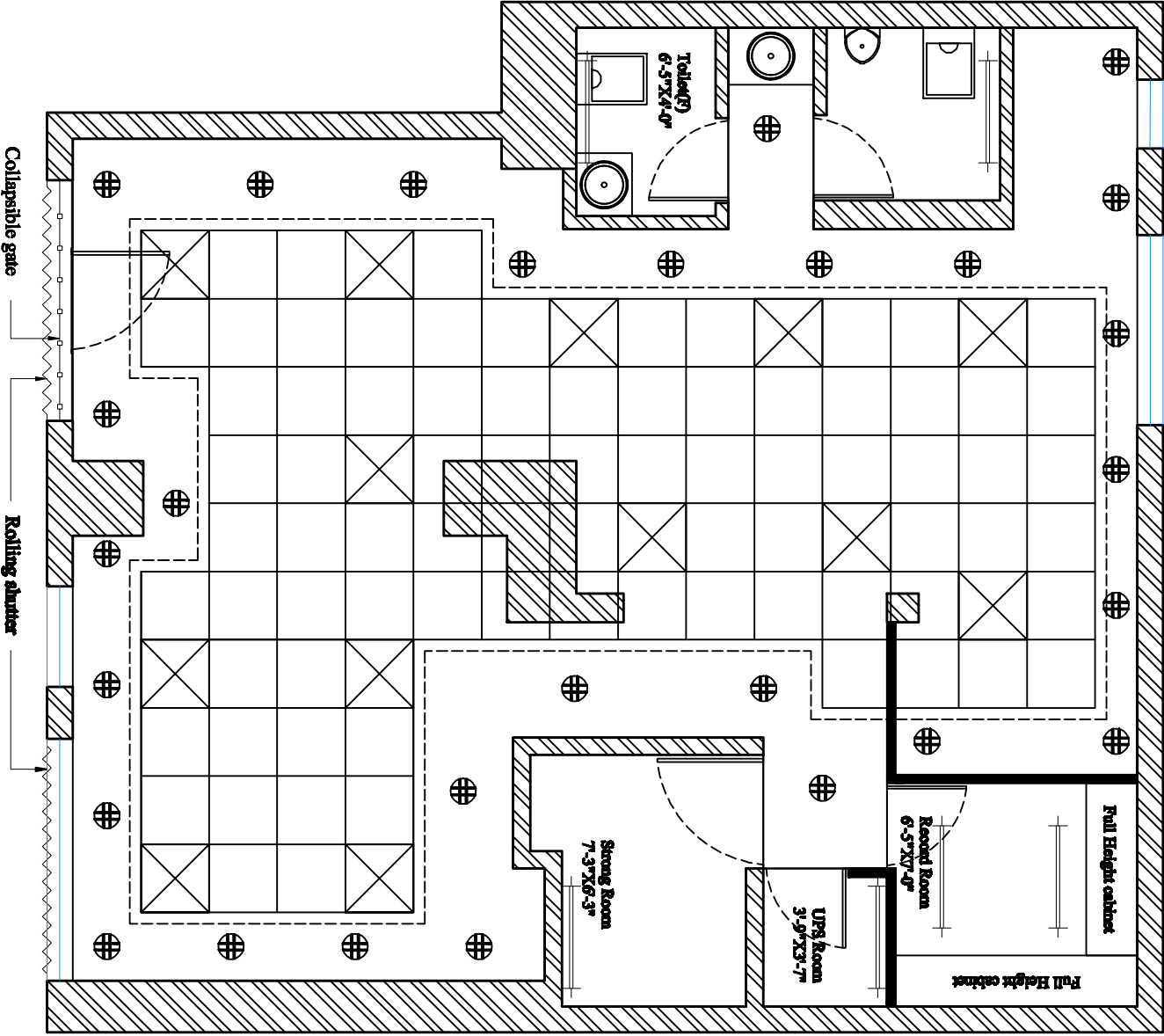
5	ELECTRICAL CABLES				
	Suitable IS/BIS standard Cable of 1.1-2.2 KV, Multi strand, FRLS 2- 4 C / 1.5/2.5 -6.0 Sqmm) as per design requirement of Peak load calculation of specific ACs system installed at site with 1"/1/2"/2" PVC conduit pipe between indoor/outdoor unit				
a	Supplying and laying of Extra Electrical interconnecting control cable from indoor to outdoor of size as specified by the manufacturer suitable for 1.0 TR/ 1.5/2.0 TR Split type AC. Approved Make- RR/ Polycab/ Havells	Mtr.	70		
b	Supplying and laying of Extra Electrical interconnecting control cable from indoor to outdoor of size as specified by the manufacturer suitable for 2.0/ 3.0 TR Cassette type AC. Approved Make- RR/ Polycab/ Havells	Mtr.	0		
6	TIMER				
a	Supplying, installation and commissioning of automatic 24 HRS. programmable TIMER of required capacity to run A.C. alternately (L&T/ Sumsung / Panasonic reputed make).	Nos.	0		
7	CORE CUTTING				
a	Core cutting member in Non RCC with civil works required at site including repairing & plastering etc.	Nos.	4		
	PART B				
	GRAND TOTAL (PART A + PART B) EXCLUDING GST				
Note: The rates quoted includes all other taxes, duties, loading, unloading, transportation, other expenses etc. to site only GST will be paid Extra					

ELECTRICAL LEGENDS	
DESCRIPTIONS	
WALL FAN	SYM HGT 6'-6"
TUBE LIGHT (LED)	+ 8'-0" / ceiling
2'-0" X 2'-0" LIGHT (LED)	⊗ ceiling
CEILING FAN	⊗ ceiling
15 W DOWN LIGHTER (LED)	⊙ ceiling
AC POINTS	⊕ 7'-0"
EXHAUST FAN	⊕ 7'-0"



PROJECT NAME: INTERIOR FURNISHING WORK OF UTTAR PRADESH GRAMIN BANK, AYODHYA BRANCH	
CLIENT NAME & ADDRESS : UTTAR PRADESH GRAMIN BANK HEAD OFFICE- 2nd & 3rd FLOOR, NBCC COMMERCIAL COMPLEX, YARDAN, KHAND, GOMTI NAGAR EXTENSION, LUCKNOW-22301	
CONSULTANTS NAME & ADDRESS : Vaastu Vikalp Architects BRANCH OFFICE-3/70, Vibhav Khond, Gomti Nagar, Lucknow-226010 REGISTERED OFFICE-SH-24, First Floor,S2S Square, Garh Road, Meerut-250002 Ph:9899328602, 9997591118 vw.global@gmail.com	
ARCHITECT: Rahul Chaudhary	NORTH:
DRAWING TITLE : PROPOSED LAYOUT PLAN	SHEET NO.: 1
DEALT : Er. Sanjoy Verma	CHECKED : Ar. Rahul Chaudhary
SCALE : 1:60	DATE : 29 Apr. 2025
DRAWING NO. : VW/BNK/BNP/INT/ UP	CERTIFY/REVISION 00/ R-0

ELECTRICAL LEGENDS	
DESCRIPTIONS	
WALL FAN	 6'-6"
TUBE LIGHT (LED)	 8'-0" / ceiling
2'-0" X 2'-0" LIGHT (LED)	 ceiling
CEILING FAN	 ceiling
15 W DOWN LIGHTER (LED)	 ceiling
AC POINTS	 7'-0"
EXHAUST FAN	 7'-0"



PROJECT NAME:
INTERIOR FURNISHING WORK OF BARODA U.P. BANK,
AYODHYA BRANCH

CLIENT NAME & ADDRESS :
UTTAR PRADESH GRAMIN BANK
HEAD OFFICE- 2nd & 3rd FLOOR, NBCC
COMMERCIAL COMPLEX, YARDAN, KHAND,
GOMTI NAGAR EXTENSION, LUCKNOW-22301

CONSULTANTS NAME & ADDRESS :

Vaastu Vikalp
Architects

BRANCH OFFICE-3/70, Vibhav Khond,
Gomti Nagar, Lucknow-226010

REGISTERED OFFICE-SH-24, First Floor,S2S
Square, Garh Road, Meerut-250002
wa.global@gmail.com

ARCHITECT: NORTH:

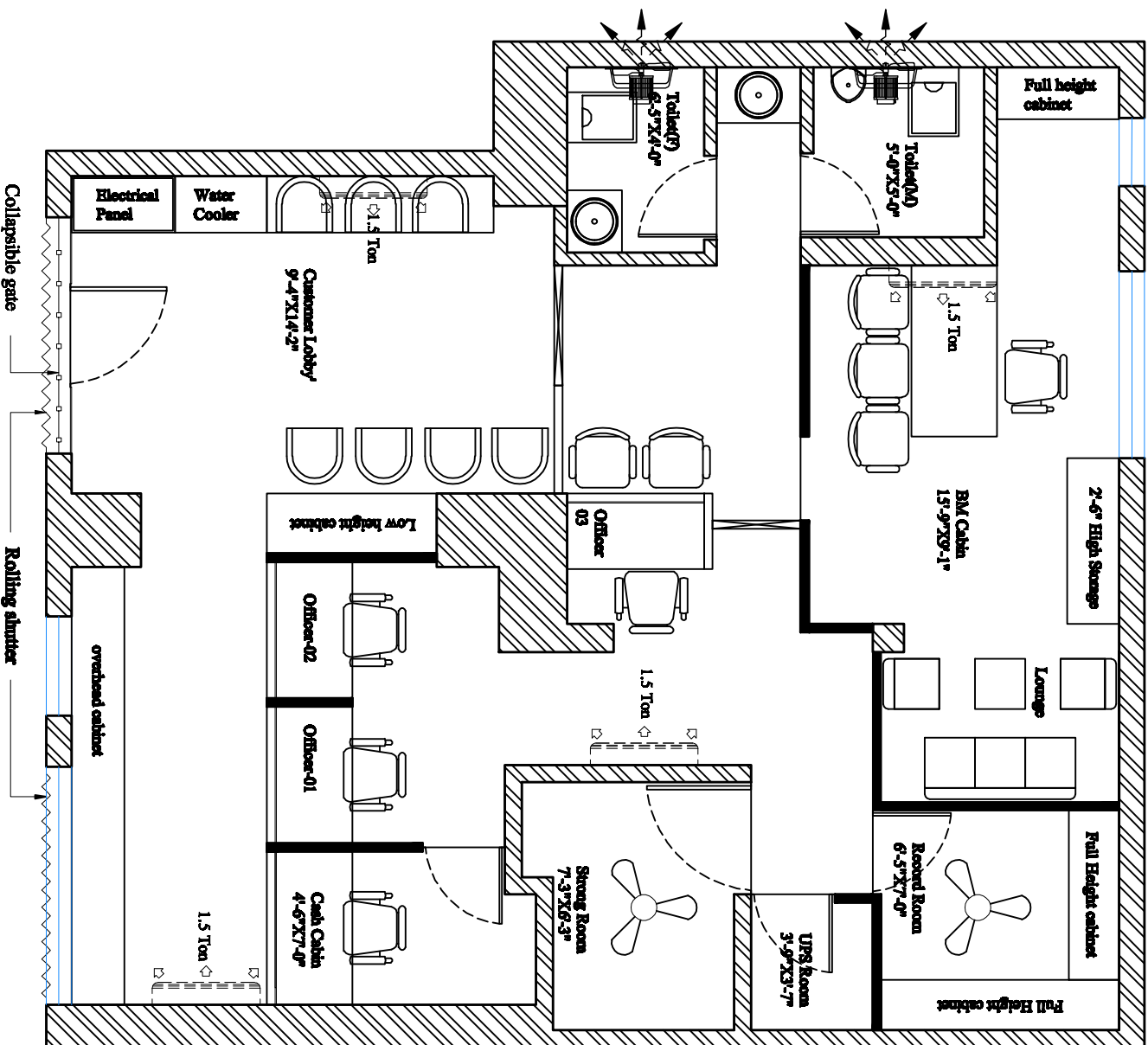
Rahul Chaudhary

DRAWING TITLE : Poise ceiling with Lighting plan

SHEET NO. : 1

DESIGN : Er. Sonjay Verma
SCALE : 1:60
DRAWING NO. : 00/ R-0
CERTIFYING /REVISION :

CHECKED : Ar. Rahul Chaudhary
DATE : 29 Apr. 2025



ELECTRICAL LEGENDS

DESCRIPTIONS	SYM	HGT
WALL FAN		6'-6"
TUBE LIGHT (LED)		8'-0" / ceiling
2'-0" X 2'-0" LIGHT (LED)		ceiling
CEILING FAN		ceiling
15 W DOWN LIGHTER (LED)		ceiling
AC POINTS		7'-0"
EXHAUST FAN		7'-0"

PROJECT NAME:

INTERIOR FURNISHING WORK OF BARODA U.P. BANK, AYODHYA BRANCH

CLIENT NAME & ADDRESS :

UTTAR PRADESH GRAMIN BANK
HEAD OFFICE- 2nd & 3rd FLOOR, NBCC
COMMERCIAL COMPLEX, YARDAN KHAND,
GOMTI NAGAR EXTENSION, LUCKNOW-22301

CONSULTANTS NAME & ADDRESS :

Vaastu Vikalp
Architects

BRANCH OFFICE-3/70, Vibhav Khurd,
Gomti Nagar, Lucknow-226010

REGISTERED OFFICE-SH-24, First Floor,S2S
Square, Garh Road, Meerut-250002
Ph:9893328602, 9997591118
vva.global@gmail.com

ARCHITECT:

Rahul Chaudhary

DRAWING TITLE :

AC Location & Ventilation plan

SHEET NO.

1

DEALT :

Er. Sanjoy Verma

CHECKED :

Ar. Rahul Chaudhary

SCALE : 1:60

DATE : 29 Apr. 2025

DRAWING NO. : 00/ R-0

WWW.VASTU.VIKALP/UP